

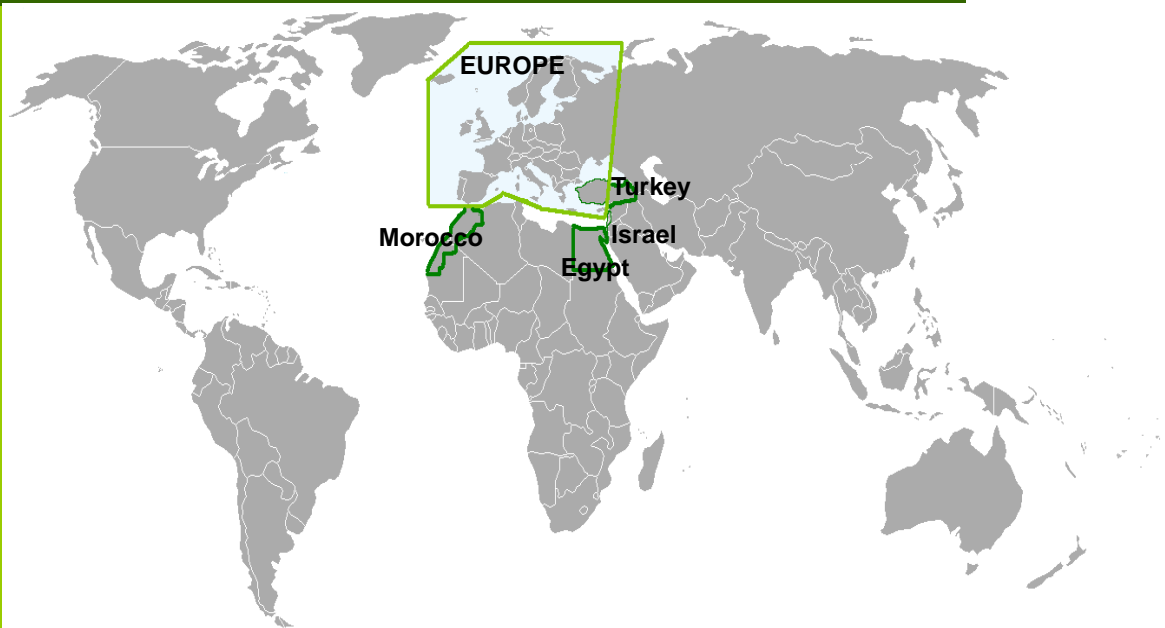
Strawberries in Europe

**International Strawberry Congress
Antwerp, September 1 2010**

Philippe Appeltans
Secretary General
Verbond van Belgische Tuinbouwveilingen

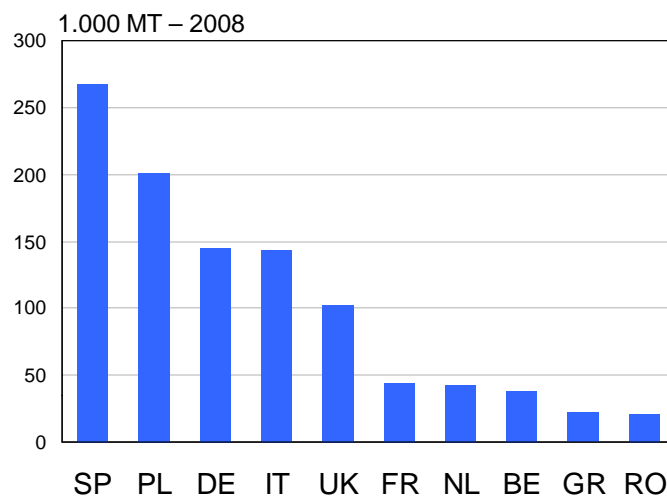


Europe / World



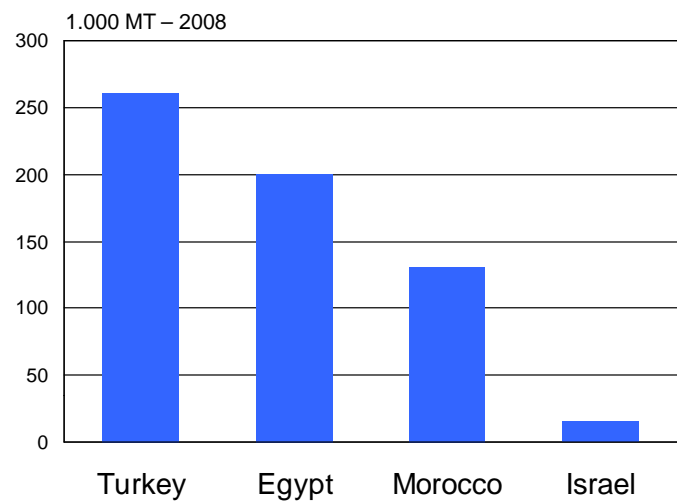
European Strawberry Production

2008	1.000 MT
Spain	267,5
Poland	200,7
Germany	144,9
Italy	143,2
UK	102,1
France	43,5
Netherlands	42,2
Belgium	37,4
Greece	22,2
Romania	21,1
EU-27	1.116,5

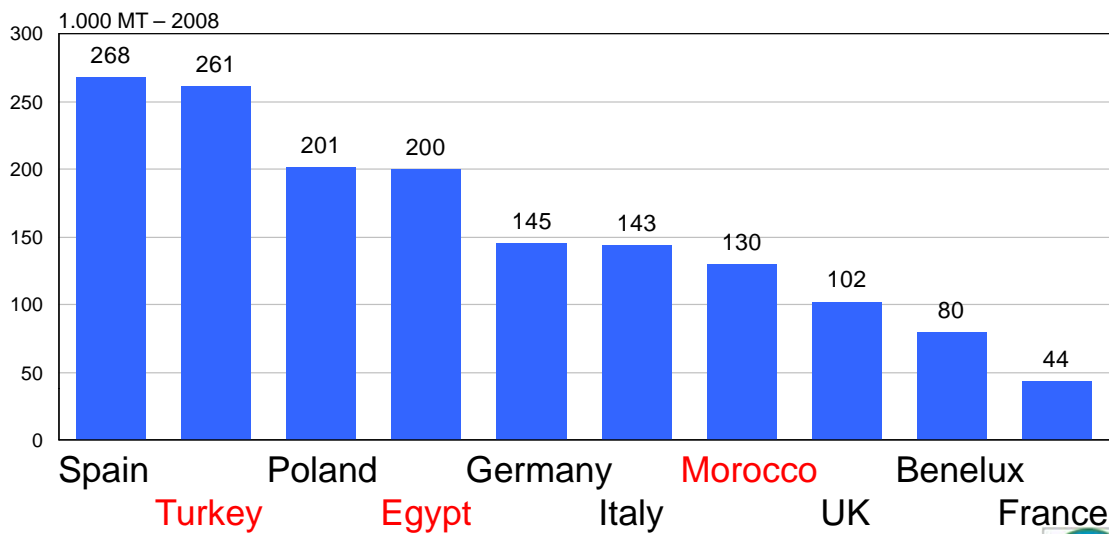


Mediterranean Strawberry Production

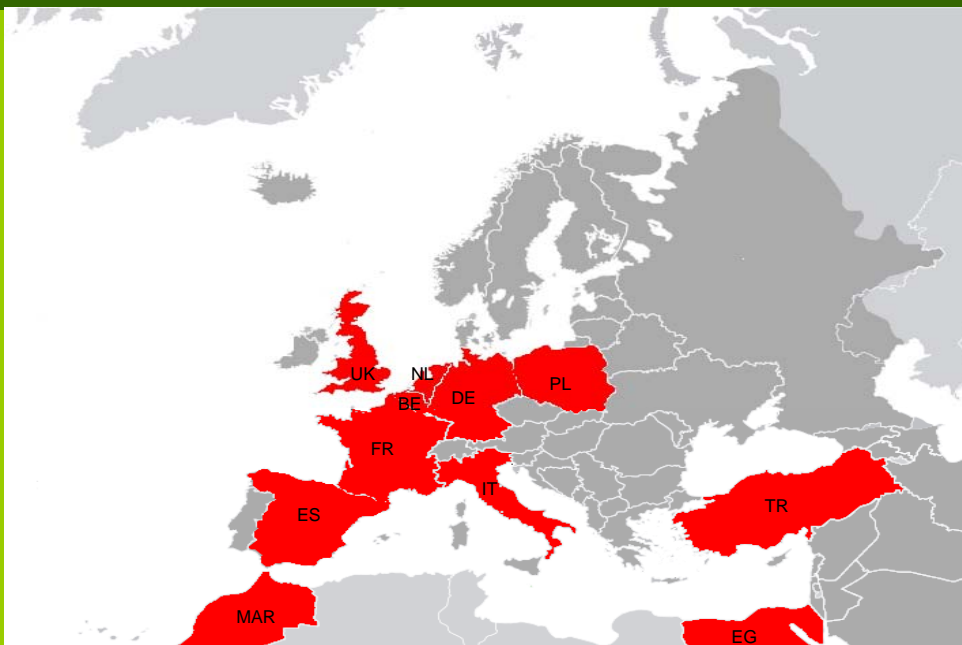
2008	1.000 MT
Turkey	261,1
Egypt	200,1
Morocco	130,0
Israel	15,9



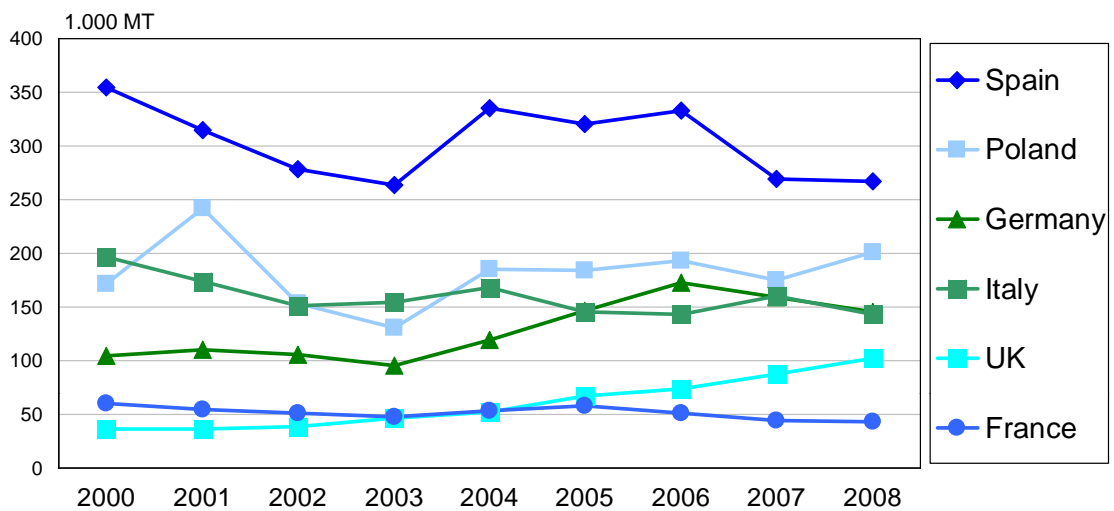
EU & Mediterranean Strawberry Production



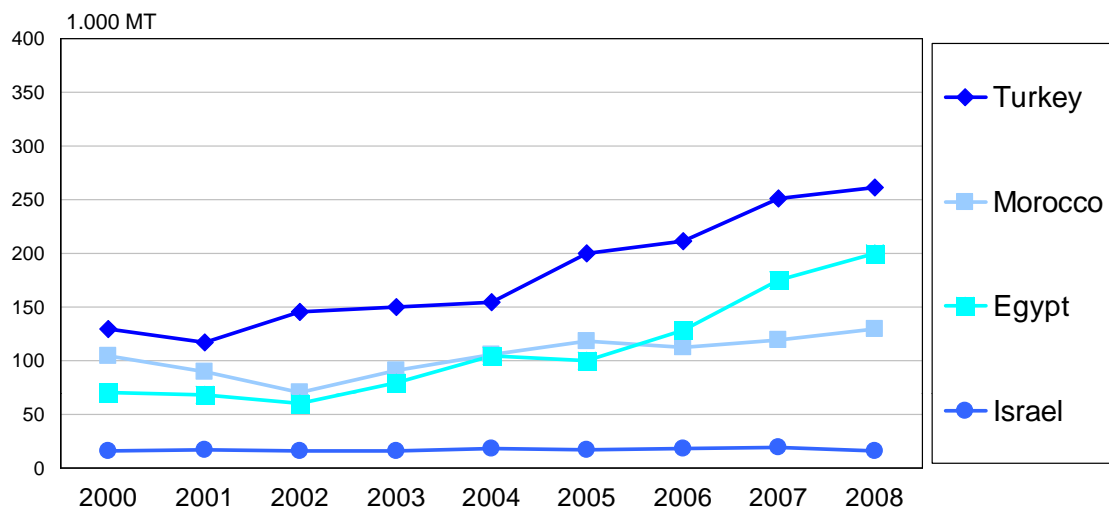
Top-10 Strawberry Producing Countries



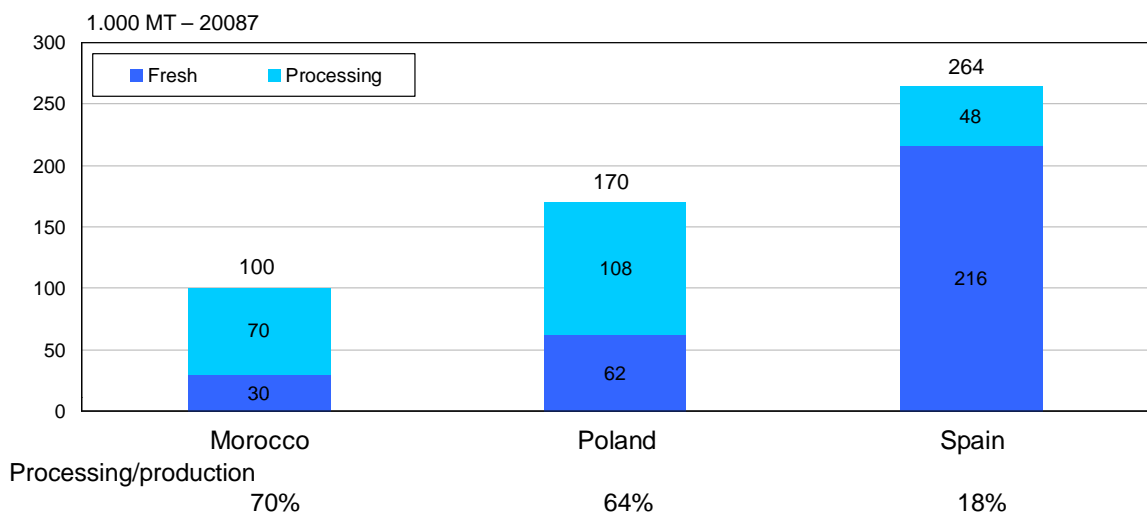
EU Strawberry Production



Mediterranean Strawberry Production



Markets for Strawberries



Belgium, Netherlands, France, Germany, Italy: 2 to 8%

Source: France – AgriMer.



Strawberry Yield

Ton/ha	2005-07	2008	2008/05-07
Spain	35.8	30.7	-13.8%
Poland	3.4	3.7	+9.3%
Germany	11.8	11.6	-1.6%
Italy	25.6	24.3	-5.1%
UK	17.4	18.2	+4.5%
France	14.8	14.4	-2.4%
Netherlands	24.2	24.1	-0.5%
Belgium	30.5	30.8	+0.9%
Greece	22.9	25.0	+9.2%
Romania	7.7	8.2	+5.8%
Turkey	20.1	23.1	+15.1%
Egypt	16.8	16.1	-4.5%
Morocco	37.8	44.1	+16.5%

Average yield – fresh and processed



Mediterranean Countries

Spain, Italy, Morocco, ...

- Mostly cultivating everbearing varieties – Californian varieties: Camarosa, Candonga, Ventana, ...
- Production season from December till April-May (respectively Egypt, Morocco, Spain)
- Mostly soil culture, with limited part protected under plastic
- Initiation of culture on table tops (Spain – Candonga)



Northern European Countries

- Mostly cultivating June bearer or day length dependent strawberry types (from Lyon/FR up North/BE and NL)
- Most important variety Elsanta even after 35 years
- Some new, early-season varieties being introduced – Clery, Sonata, Darselect, ...
- Plant storage below -1.8°C allows year-round cultivation with production from March till December (BE, NL)

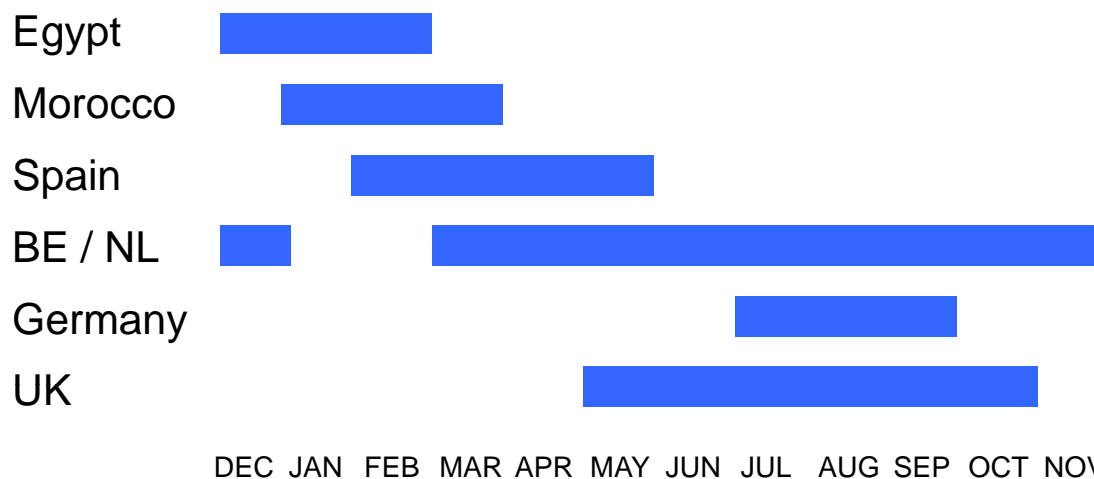


Northern European Countries

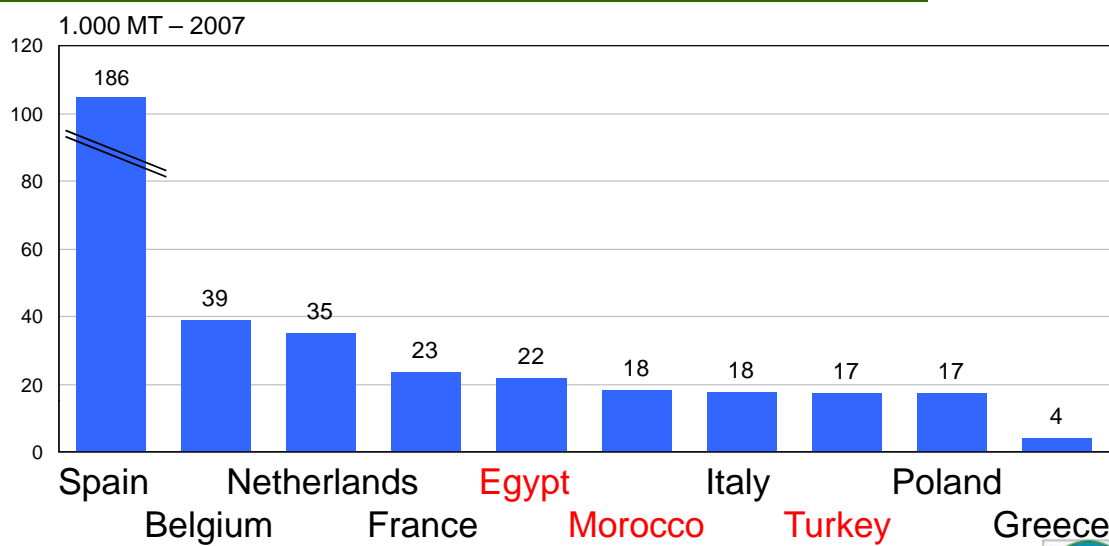
- BE & NL: significant protected culture – glass (heated), plastic – and soil culture; increasing importance of culture on table tops (protected, non-protected)
- DE: mostly soil culture and especially summer production (July-September)
- UK: combination of above



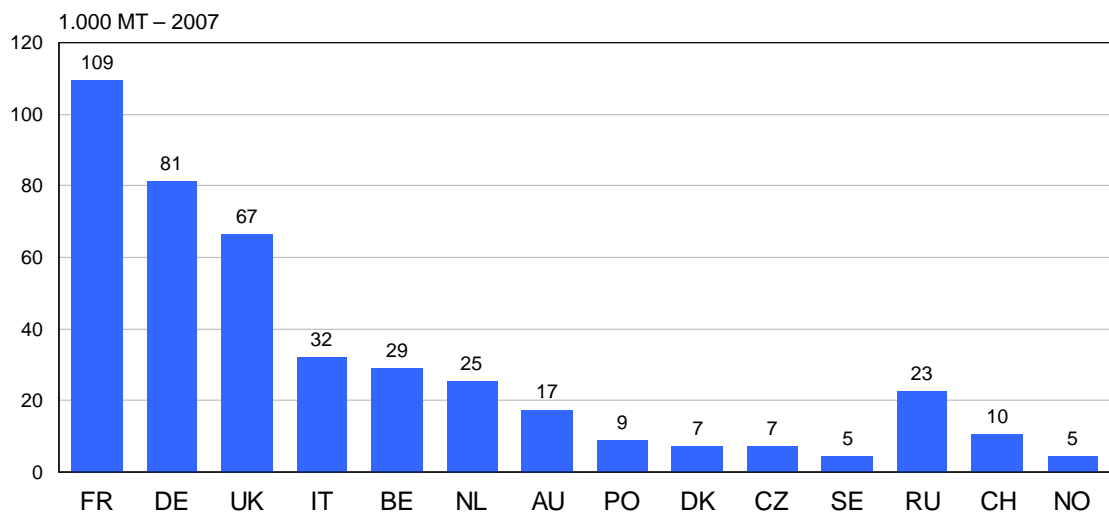
Strawberry Production Season



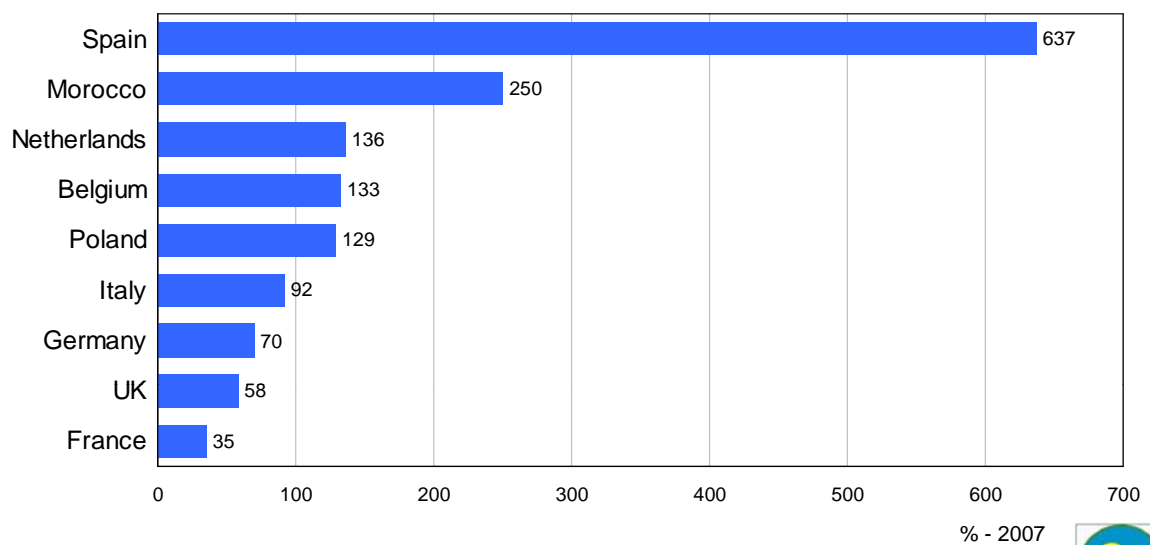
Strawberry Export



Strawberry Import



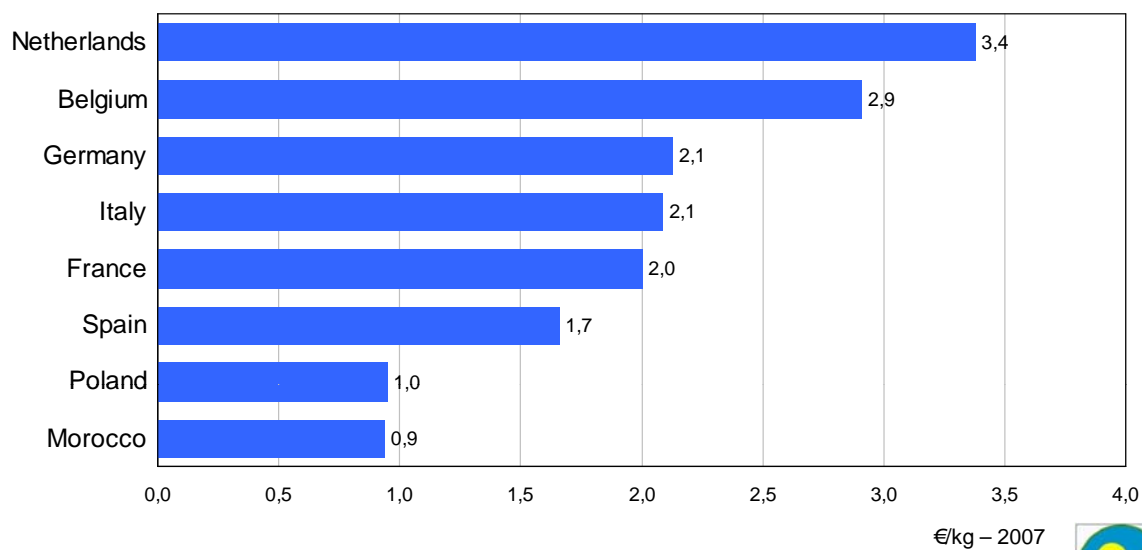
Strawberry Self-Sufficiency Rate



Source: France – AgriMer.



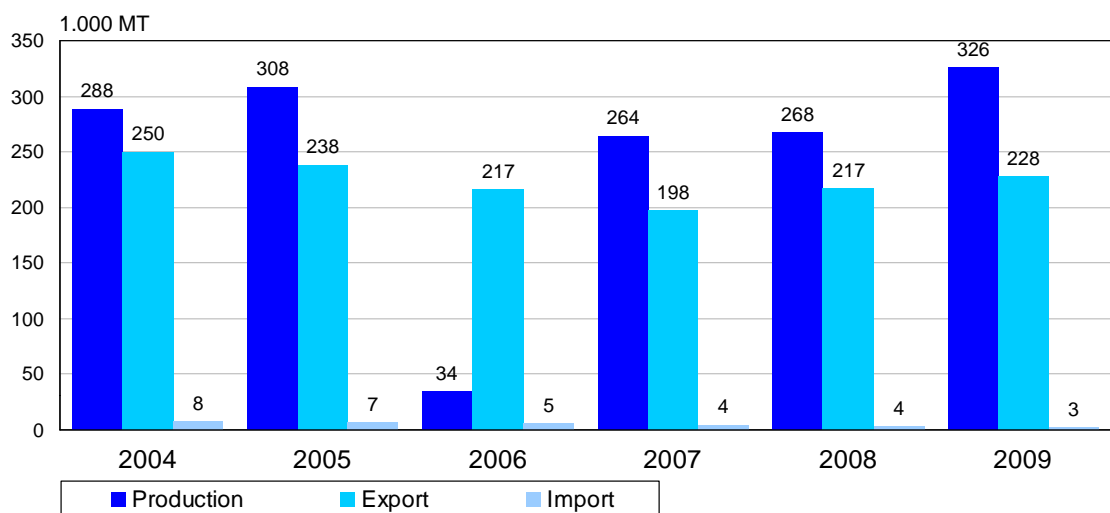
Strawberry Export Price



Source: France – AgriMer.



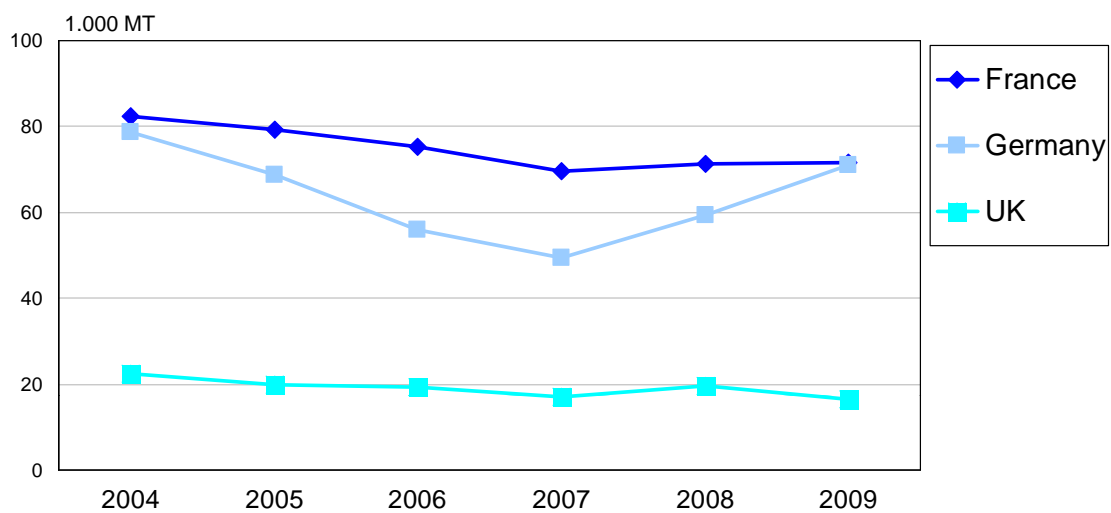
Strawberries – Spain



Source: AMI.



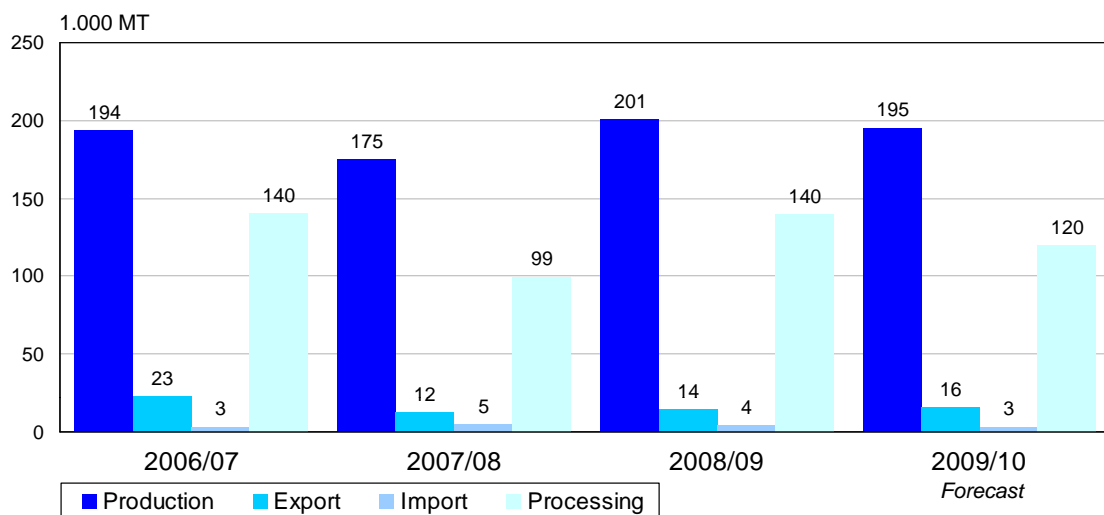
Strawberry Export – Spain



± 18% of production for processing



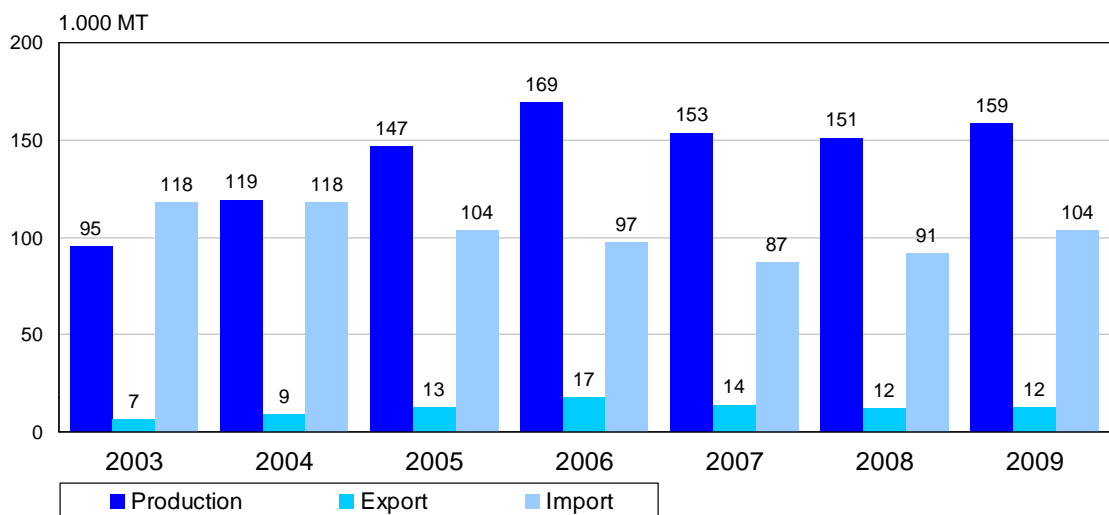
Strawberries – Poland



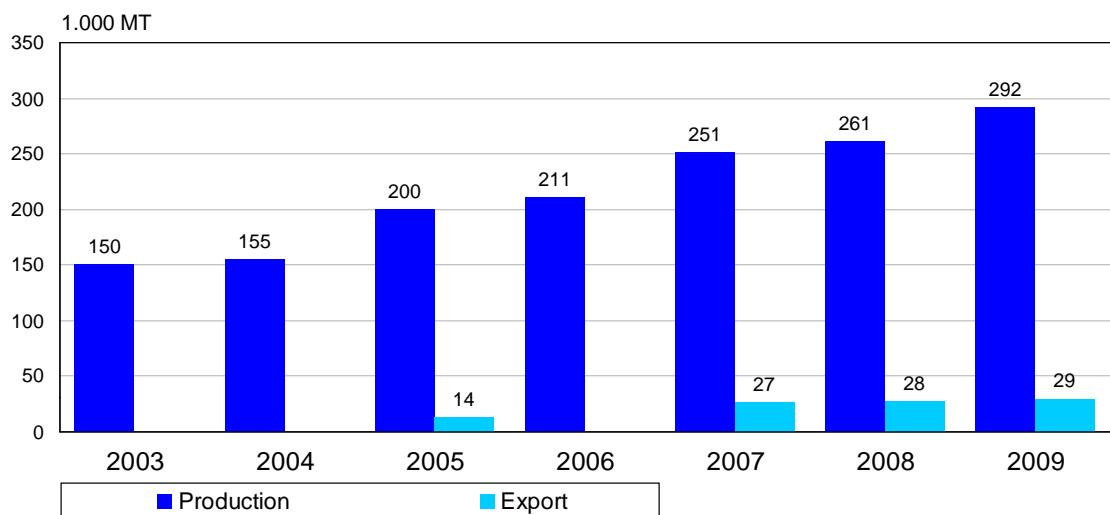
Source: USDA.



Strawberries – Germany



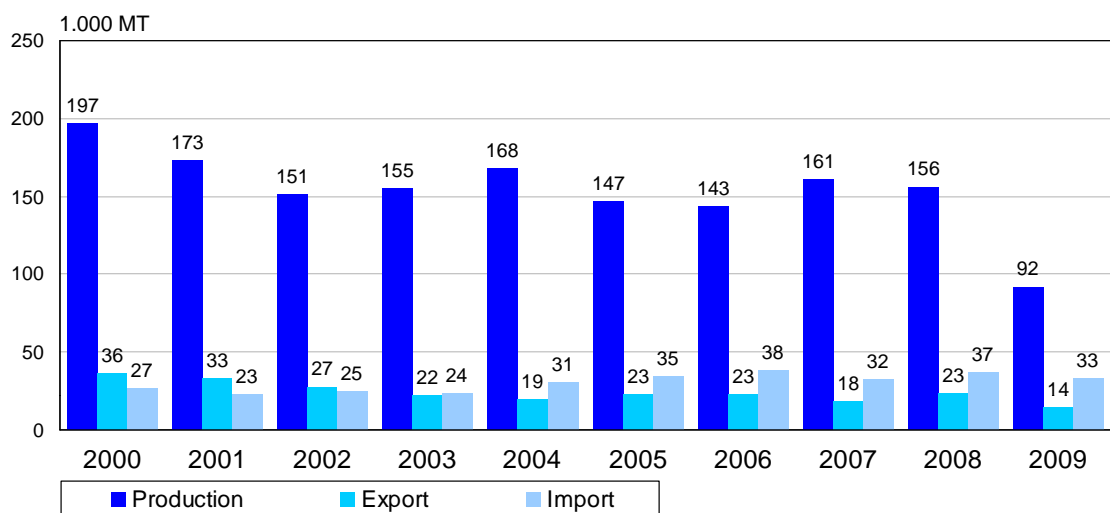
Strawberries – Turkey



Export mainly to Russian Federation, Romania, Bulgaria, Ukraine



Strawberries – Italy



Export mainly to Germany, Switzerland, Austria
Import mainly from Spain and France



Thank you for your attention

